



# Cat<sup>®</sup> 307.5

## MINI HYDRAULIC EXCAVATOR

### FEATURES:

The Cat<sup>®</sup> 307.5 Mini Excavator delivers maximum power and performance in a mini size to help you work in a wide range of applications.

#### ALL DAY COMFORT

- A sealed and pressurized cab is equipped with an improved air conditioning system, adjustable wrist rests and a suspension seat to help keep you working comfortably all day long.

#### EASY TO OPERATE

- Controls are easy to use and the intuitive Next Generation Monitor provides customizable machine operator preferences and easy to read machine information.

#### STICK STEER TRAVEL MODE

- Moving around the job site is even easier with the Cat Stick Steer option. Easily switch from traditional travel controls with levers and pedals to joystick controls with a push of a button. The benefit of less effort and improved control is in your hands!

#### BIG PERFORMANCE IN A MINI DESIGN

- Increased lifting, swinging, travel and multi-functioning performance helps you get the job done more efficiently, and dig-to-blade allows for easy clean up.

#### SAFETY ON THE JOB SITE

- Your safety is our top priority. The Cat Mini Excavator is designed to help keep you safe on the job. Courtesy work lights and a fluorescent retractable seat belt are just a few of the safety features we've built into the machine.

#### SIMPLE SERVICE FOR LESS DOWNTIME

- Maintenance is quick and easy on the Cat Mini Excavator. Routine check points are easy to access at ground level with grouped service points and robust service panels.

#### LOWER OPERATING COSTS

- Equipped with features such as auto idle, auto engine shutdown, and efficient hydraulics with a variable displacement pump, the Cat Mini Excavator was designed with reducing your operating costs in mind.

#### UNMATCHED DEALER SUPPORT

- Your Cat dealer is here to help you reach your business goals. From providing equipment solutions to operator training to service needs and beyond, your Cat dealer is ready to help.

## Specifications

### Engine

Engine Model	Cat C2.4 Turbo
<b>Rated Net Power @ 2,400 rpm</b> ISO 9249/EEC 80/1269	34.9 kW
<b>Gross Power</b> ISO 14396	36.5 kW
Bore	87 mm
Stroke	102 mm
Displacement	2.43 L

### Weights

Minimum Operating Weight with Cab*	7504 kg
Maximum Operating Weight with Cab**	8113 kg

\*Minimum Weight is based on steel tracks, no extra counterweight, operator, full fuel tank, standard stick and bucket.

\*\*Maximum Weight is based on steel tracks, extra counterweight, operator, full fuel tank, standard stick, blade and bucket.

### Weight Increase from Minimum Configuration

Extra Counterweight	250 kg
Blade	333 kg



# 307.5 Mini Hydraulic Excavator

## Travel System

Travel Speed – High	5.0 km/h
Travel Speed – Low	3.1 km/h
Maximum Traction Force – High Speed	26.1 kN
Maximum Traction Force – Low Speed	62.4 kN
Ground Pressure – Minimum Weight	32.6 kPa
Ground Pressure – Maximum Weight	35.2 kPa
Gradeability (maximum)	30 degrees

## Service Refill Capacities

Cooling System	10.0 L
Engine Oil	9.5 L
Fuel Tank	145 L
Hydraulic Tank	53 L
Hydraulic System	104 L

## Hydraulic System

Load Sensing Hydraulics with Variable Displacement Piston Pump	
Pump Flow @ 2,400 rpm	167 L/min
Operating Pressure – Equipment	285 bar
Operating Pressure – Travel	285 bar
Operating Pressure – Swing	250 bar
Auxiliary Circuit – Primary	
Flow	131 L/min
Pressure	285 bar
Digging Force – Stick (standard)	37.8 kN
Digging Force – Bucket	54.6 kN

## Swing System

Machine Swing Speed	10 rpm
---------------------	--------

## Blade

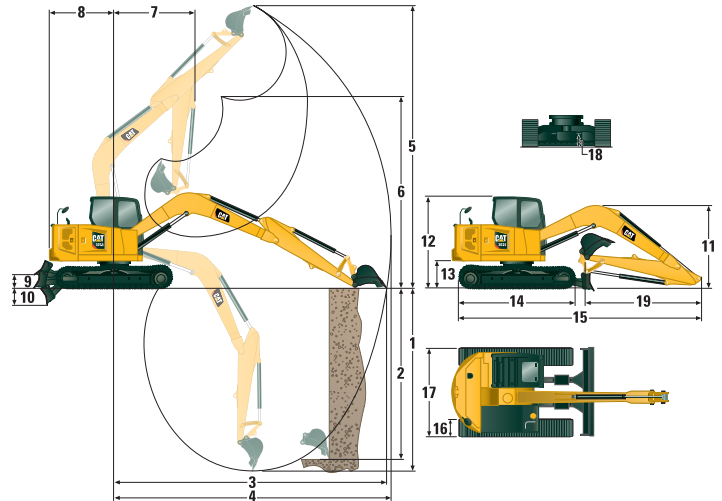
Width	2280 mm
Height	431 mm

## Certification – Cab

Roll Over Protective Structure (ROPS)	ISO 12117-2:2008
Tip Over Protective Structure (TOPS)	ISO 12117:1997
Top Guard	ISO 10262:1998 (Level II)

## Sound

Operator Sound Pressure (ISO 6396:2008)	72 dB(A)
Average Exterior Sound Pressure (ISO 6395:2008)	98 dB(A)



## Dimensions

	Standard Stick
1 Dig Depth	4107 mm
2 Vertical Wall	3604 mm
3 Maximum Reach at Ground Level	6152 mm
4 Maximum Reach	6297 mm
5 Maximum Dig Height	7341 mm
6 Maximum Dump Clearance	5293 mm
7 Boom in Reach	1681 mm
8 Tail Swing	
with Extra Counterweight	1995 mm
without Extra Counterweight	1800 mm
9 Maximum Blade Height	363 mm
10 Maximum Blade Depth	414 mm
11 Transport Height	2558 mm
12 Cab Height	2534 mm
13 Swing Bearing Height	756 mm
14 Overall Undercarriage Length	2760 mm
15 Overall Shipping Length	6144 mm
16 Track Belt/Shoe Width	450 mm
17 Overall Track Width	2200 mm
Width over Upper House	2250 mm
18 Ground Clearance	370 mm
19 Stick Length	1665 mm

# 307.5 Mini Hydraulic Excavator

## Lift Capacities – Minimum Configuration\*

Lift Point Height			3 m			4.5 m			Lift Point Radius (Maximum)			
			Over Front		Over Side	Over Front		Over Side	Over Front		Over Side	m
			Blade Down	Blade Up		Blade Down	Blade Up		Blade Down	Blade Up		
4.5 m	Standard Stick	kg	2248	2248	2257				1113	1113	1113	4.45
3 m	Standard Stick	kg	2728	2728	2758	2141	1646	1461	1047	1047	1047	5.19
1.5 m	Standard Stick	kg	3466	2899	2488	2341	1551	1367	1090	1090	1090	5.43
0 m	Standard Stick	kg	3678	2692	2294	2401	1470	1287	1250	1250	1017	5.25

\*Minimum Weight includes steel tracks, no extra counterweight, operator, full fuel tank, standard stick and bucket.

## Lift Capacities – Maximum Configuration\*\*

Lift Point Height			3 m			4.5 m			Lift Point Radius (Maximum)			
			Over Front		Over Side	Over Front		Over Side	Over Front		Over Side	m
			Blade Down	Blade Up		Blade Down	Blade Up		Blade Down	Blade Up		
4.5 m	Standard Stick	kg	2252	2252	2261				1110	1110	1110	4.45
3 m	Standard Stick	kg	2743	2743	2774	2145	2145	1681	1047	1047	1047	5.19
1.5 m	Standard Stick	kg	3477	3477	2863	2345	1800	1586	1092	1092	1092	5.43
0 m	Standard Stick	kg	3675	3136	2674	2398	1720	1507	1255	1255	1255	5.25

\*\*Maximum Weight includes steel tracks with extra counterweight, operator, full fuel tank, standard stick, blade and bucket.

# 307.5 Mini Hydraulic Excavator

## EQUIPMENT

### ENGINE

- Cat C2.4 Diesel Engine (China Nonroad Stage III) – Mechanical Engine, Turbo
- Automatic Engine Idle
- Automatic Engine Shutdown
- Automatic Swing Brake
- Automatic Two Speed Travel
- Fuel Water Separator with Indicator
- Radial Seal – Double Element Air Filter
- Extended Life Coolant, –37° C

### HYDRAULICS

- Smart Tech Electronic Pump
- Variable Displacement Piston Pump
- Load Sensing/Flow Sharing Hydraulics
- Power On Demand
- Hydraulic Temperature Monitoring
- Certified Accumulator
- Hydro Advanced Hydraulic Oil

### OPERATOR ENVIRONMENT

- Sealed and Pressurized Cab
- Operator Sound Pressure 72 dB(A) ISO 6396:2008
- Stick Steer Mode
- Control Pattern Changer
- Adjustable Wrist Rests
- Molded Footrests
- Removable, Washable Floor Mat

- Travel Pedals and Hand Levers
- Cat Key with Passcode Option
- HVAC with Automatic Temperature Control
- Hydraulic Lockout Controls
- Assisted Front Window Overhead Storage
- Rear Window Emergency Exit
- Fabric, High Back, Suspension Seat
- Retractable Seat Belt (51 mm)
- Coat Hook
- Cup Holder
- LED Interior Light
- Literature Holder
- 12V Power Socket
- Radio – Bluetooth®, USB, Auxiliary, Microphone
- Skylight
- Mounting Bosses for Top and Front Guards
- ROPS – ISO 12117-2:2008
- TOPS – ISO 12117:1997
- Top Guard – ISO 10262:1998 (Level II)
- Color LCD Monitor
  - Fuel Level and Coolant Temperature Gauges
  - Maintenance and Machine Monitoring
  - Performance and Machine Adjustments
  - Numeric Security Code
  - Multiple Languages
  - Hour Meter with Wake Up Switch
  - Jog Dial Control Interface

### UNDERCARRIAGE

- Greased and Lubricated Track
- Hydraulic Track Adjusters
- Tie Down Eyes on Track Frame
- Steel Tracks (450 mm wide)

### BOOM, STICK AND LINKAGES

- One Piece Boom (3700 mm)
- Standard Stick (1665 mm)
- Front Shovel Capable

### ELECTRICAL

- 12 Volt Electrical System
- 90 Ampere Alternator
- 850 CCA Maintenance Free Battery
- Circuit Breaker
- Ignition Key Stop Switch
- Signaling/Warning Horn
- Product Link™ Elite Lite (regulations apply)

## OPTIONAL EQUIPMENT

### OPERATOR ENVIRONMENT

- Premium Monitor Package with Rear Camera
- Security Key/Push to Start

### ELECTRICAL

- Rear Light
- Travel Alarm

### OTHER

- Hammers
- Dozer Blade, Blade Float
- Counterweight, Extra
- One-Way Auxiliary
- Two-Way Auxiliary
- Steel Tracks (600 mm wide)
- Center Track Guard
- Radiator Screen Guard
- Water Jacket Heater
- Ecology Drain for Engine

For more complete information on Cat products, dealer services, and industry solutions, visit us on the web at [www.cat.com](http://www.cat.com)

© 2019 Caterpillar  
All rights reserved

Materials and specifications are subject to change without notice. Featured machines in photos may include additional equipment. See your Cat dealer for available options.

CAT, CATERPILLAR, LET'S DO THE WORK, their respective logos, "Caterpillar Yellow", the "Power Edge" and Cat "Modern Hex" trade dress as well as corporate and product identity used herein, are trademarks of Caterpillar and may not be used without permission.

AEHQ8183 (01-2019)  
(Southeast Asia)

